



Myers Pickups / The Feather

A Division of MYERSCO

Patents Pending

Thank you for your order! We appreciate your business. We hope you find hours of enjoyment and that this product meets and exceeds your expectations. At MYERSCO, we are committed to your complete satisfaction.

If, for any reason, you are not satisfied, please contact us at myersco@me.com or call us at 714-900-0176.

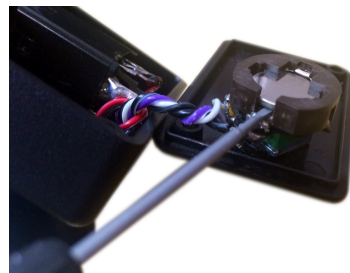
Please give us the opportunity to resolve any issue before leaving any negative feedback online.

“The Feather” Pickup Instructions

Your pickup arrives COMPLETE. There is nothing you need to do but mount your “Feather” (flexible Micro-Gooseneck) and plug it in. We recommend using a keyboard amplifier to reach all the highs and lows your instrument can produce, but most amplifiers will perform fine.

The lithium battery is already installed and ready to go. The included battery should give you hundreds of playing hours. The battery needed for your pickup is a coin cell CR1220 and can be purchased at almost any electronic or discount stores where batteries are sold. **Please remember to UNPLUG your cord when not playing to preserve the battery life.** There is a miniature switch inside the jack that is activated when the cord is inserted.

Change the battery by removing the two small screws on the top plate of your pickup. CAREFULLY and gently, lift the lid so the wires are not pulled too hard. Flip the lid over and place two fingers on the battery housing. Carefully place a small Phillips head screwdriver (or brass head nail included in your accessories package) between the battery housing and the battery. Push the tool to the center of the disc of the battery. Replace the fresh battery with the Positive (+) side upward.



See videos for battery replacement or low gain/feedback at <https://www.myerspicks.com/support>.

Mounting Your “Feather”

Before mounting your Feather, test your pickup by plugging it in and speaking into the ultra-light microphone element on the end on the flexible Micro-Gooseneck. Your voice should be loud and clear. If not, check the battery. Sometimes in transit, the battery becomes loose and all you need to do is reinstall it.

After you have sound tested your “Feather,” now it is time to mount it on your instrument. Experiment with different locations for the sound you desire. Most people prefer to have the pickup element about ½” from the sound hole or wherever the sound is produced. Once you have determined where to place your “Feather,” the next step is to mount it.

The “Feather” is mounted by using the patented “Saddle-Clip” (provided). One side of the Saddle-Clip is used to hold the Saddle-Clip to the instrument and the other side of it is to saddle/hold the “Feather” securely in place. Adjust the Flexible Micro-Gooseneck to your desired position and you are ready to plug in. Your “Feather” includes a belt clip. Mount the belt clip to the back of the preamp box with the “VHB” (very high bond) two-sided tape included. Keep in mind which way you want the direction of the cable to determine the best placement on the clip for you being a right-hand or a left-handed player.



Note: MYERSCO, the maker of Myers Pickups, is not responsible for any damage to your instrument. It is highly recommended that you experiment first for the best placement to enhance sound and esthetics.